

RESILIENT WHEELS



REDUCED
UNSPRUNG MASS

REDUCTION
OF VIBRATION
AND NOISE

EASY REPLACEMENT
OF WHEEL TYRES

MAINTENANCE
AND SERVICES

KEY BENEFITS OF MG-VALDUNES SOLUTIONS

TAILOR-MADE SOLUTIONS, BECAUSE EACH PROJECT IS UNIQUE

Specifics like: **small diameter, high wheel load, limited space envelope, wide range of stiffness.**

MAINTAINABILITY, BECAUSE SERVICE COSTS MUST BE MINIMAL

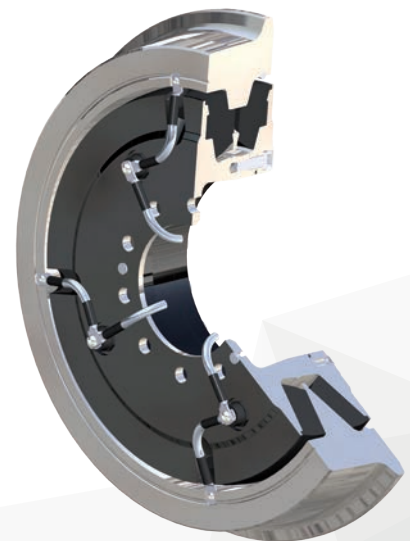
One common feature for all our wheels: a split design. Three steel parts: a wheel tyre, a wheel body and a wedge ring. In between, some pre-stressed rubber elements: one rubber ring or two rubber rings. **Results: a very easy replacement of tyres and rubber elements, with hydraulic press.**

RUNNING COMFORT, FOR THE PASSENGER, THE RESIDENT, THE VEHICLE AND ITS TRACK

Proven by field measurements or positive customer ratings. MG-Valdunes resilient wheels provide **a very efficient reduction of shocks and vibrations.** With their low radial stiffness, the VUT™ or VUT NEO™ wheel can replace **a primary suspension or accommodate specific (low floor) bogie designs, e.g. direct motor drives.**

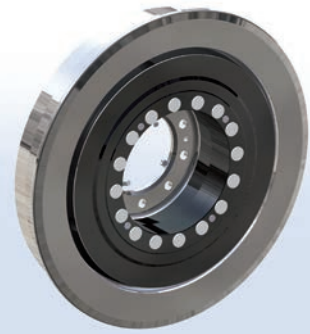
NOISE REDUCTION

MG-Valdunes resilient wheels decrease rolling noise and squealing noise in curves. In case of additional requirements, **MG-Valdunes proposes customised noise absorption systems**, like rings, absorbers, mounted on the wheel tyre.



VUT™ Wheel.

RESILIENT WHEELS



VUT™ Wheel.

VUT™ OR VUT NEO™

The VUT™ OR VUT NEO™ renders primary suspension unnecessary, and allows a wheel hub integrated drive.

Features

- Low radial stiffness.
- Wheel diameters from 590 mm to 715 mm.
- Wheel loads up to 60 kN.
- Maximum vehicle speed: 80 kph.

Special benefits

- High level of passenger comfort.
- Compact wheel including primary suspension function.
- Reduced maintenance downtime.
- Improved safety by limited axial deflection and V-shaped tyre and rubber rings.

Since 1998, more than 20'000 VUT™ wheels in operation.

MAINTENANCE & CUSTOMER SUPPORT

- Deliveries of complete wheels for new applications or kits for maintenance.
- Safety.
- Reliability.
- Short lead-time.
- Spare parts management.
- Large panel of sourcing solutions.
- LCC (Life Cycle Cost) optimization.

VLR 1060™ TRAMWAY WHEELS

Ideal solution for modern low flow light-rail vehicles with limited installation place, small diameter and relatively high wheel load. These wheels are well adapted for conventional tramway and Tram-train applications.

Features

- Medium radial and high axial stiffness.
- Wheel diameters from 400 mm to 880 mm.
- Wheel loads up to 75 kN.
- Minimum space required - one rubber ring only.

Special benefits

- Reduced maintenance downtime.
- Easy and fast wheel tyre replacement.
- Easy inspection of earthing shunts.
- Light weight.
- Improved safety by limited axial deflection.

SOME OF OUR REFERENCES

Car builders: Alstom, Bombardier...

Some networks using VUT™ wheels: Melbourne (Australia), Bordeaux, Lyon, Mulhouse, Paris, Strasbourg, Valenciennes (France), Dublin (Ireland), Barcelona, Madrid, Tenerife (Spain), Tunis (Tunisia), Rabat (Morocco)...

OUR BUSINESS SPIRIT
: INNOVATION & PERFORMANCE

